



MOLETEADORES POR DEFORMACIÓN FORM-KNURLING TOOLS



M19

+ Características

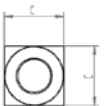
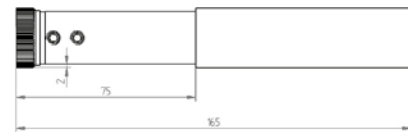
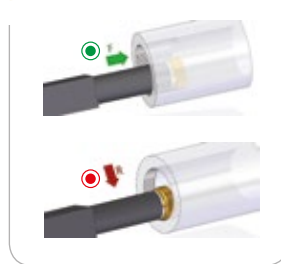
- Recomendado para moleteados tipo RAA
- Para moleteado interior
- Eje de HSS
- Provista de arandela de HSS para evitar el desgaste de la herramienta

+ Features

- Recommended for RAA type knurling
- For internal knurling
- HSS bushing
- Supplied with a HSS hardened washer to prevent tool wearing



+ Avance Feed



+ Formas de moleteados realizables Feasible knurling forms

| | R | RAA | RBL 30° | RBL 45° | RBR 30° | RBR 45° | RGE 30° | RGE 45° | RGV 30° | RGV 45° | RKE | RKV |
|-------------------------------------|---|---------|---------|---------|---------|---------|---------|---------|---------|---------|-----|-----|
| Tipo de moleteado Knurling form | | | | | | | | | | | | |
| Con moleta tipo With knurl type | | AA | BR 30° | BR 45° | BL 30° | BL 45° | GV 30° | GV 45° | GE 30° | GE 45° | KV | KE |
| Avances permitidos Allowed feeds | | F ● R ● | F ● R ● | F ● R ● | F ● R ● | F ● R ● | R ● | R ● | R ● | R ● | R ● | R ● |

R Moleteados recomendados | Recommended knurlings

| Herramienta Tool | | | | | | |
|--------------------|-------------------------|--------------------|-----------------------|-----------------|----|----------|
| Código Code | Referencia Reference | Versión Version | Capacidad Capacity | Moleta Knurl | C | Kg Kg |
| 01190100 | M19 25.10.20 | R+L | ∅ 30-200 | 25x10x15/11 | 20 | 0.7 |
| 01190200 | M19 25.10.25 | R+L | ∅ 30-200 | 25x10x15/11 | 25 | 0.8 |

| Repuesto Spare Part | |
|-----------------------|-------------------------|
| Código Code | Referencia Reference |
| 01983200 | EAM10 |

