

## Centre drills

### Centre drills without flat

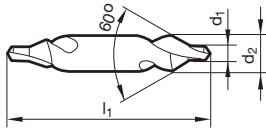


Catalog no. 71600



<b>P</b>	<b>M</b>	<b>K</b>	<b>N</b>	<b>S</b>	<b>H</b>
•	•	•	•	○	

- web thinning  $\geq \varnothing 2.000$
- relieved cone
- for centre holes acc. to DIN 332, sheet 1, form A
- $d1 \leq 0.8$  mm: not double ended



d1 mm	d2 mm	l1 mm	d1 mm	d2 mm	l1 mm
0.500	3.150	25.000	10.000	25.000	100.000
0.800	3.150	25.000	12.500	31.500	125.000
1.000	3.150	31.500			
1.250	3.150	31.500			
1.600	4.000	35.500			
2.000	5.000	40.000			
2.500	6.300	45.000			
3.150	8.000	50.000			
4.000	10.000	56.000			
5.000	12.500	63.000			
6.300	16.000	71.000			
8.000	20.000	80.000			

## Centre drills

### Centre drills without flat

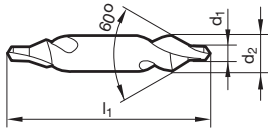


Catalog no. 71601



<b>P</b>	<b>M</b>	<b>K</b>	<b>N</b>	<b>S</b>	<b>H</b>
•	•	•	•	○	

- web thinning  $\geq \varnothing 2.000$
- relieved cone
- for centre holes acc. to DIN 332, sheet 1, form A
- $d1 \leq 0.8$  mm: not double ended



d1 mm	d2 mm	l1 mm
0.500	3.150	25.000
0.800	3.150	25.000
1.000	3.150	31.500
1.250	3.150	31.500
1.600	4.000	35.500
2.000	5.000	40.000

d1 mm	d2 mm	l1 mm
2.500	6.300	45.000
3.150	8.000	50.000
4.000	10.000	56.000
5.000	12.500	63.000
6.300	16.000	71.000
8.000	20.000	80.000

Centre drills

Centre drills without flat

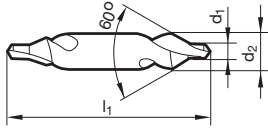


Catalog no. 71602



<b>P</b>	<b>M</b>	<b>K</b>	<b>N</b>	<b>S</b>	<b>H</b>
●	●	●	●	○	

- web thinning ≥ Ø 2.000
- relieved cone
- correct positioning between lathe centres
- for centre holes acc. to DIN 332 part 1, form R
- d1 ≤ 0.8 mm: not double ended



d1 mm	d2 mm	l1 mm
0.500	3.150	25.000
0.800	3.150	25.000
1.000	3.150	31.500
1.250	3.150	31.500
1.600	4.000	35.500
2.000	5.000	40.000
2.500	6.300	45.000
3.150	8.000	50.000
4.000	10.000	56.000
5.000	12.500	63.000
6.300	16.000	71.000
8.000	20.000	80.000

d1 mm	d2 mm	l1 mm
<b>10.000</b>	25.000	100.000

## Centre drills

### Centre drills without flat

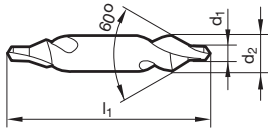


Catalog no. 61602



P	M	K	N	S	H
•	•	•	•	•	

- web thinning  $\geq \varnothing 2.000$
- relieved cone
- correct positioning between lathe centres
- for centre holes acc. to DIN 332 part 1, form R
- increased wear protection
- $d1 \leq 0.8$  mm: not double ended



d1 mm	d2 mm	l1 mm
0.800	3.150	25.000
1.000	3.150	31.500
1.250	3.150	31.500
1.600	4.000	35.500
2.000	5.000	40.000
2.500	6.300	45.000

d1 mm	d2 mm	l1 mm
3.150	8.000	50.000
4.000	10.000	56.000
5.000	12.500	63.000
6.300	16.000	71.000

## Centre drills

### Centre drills without flat

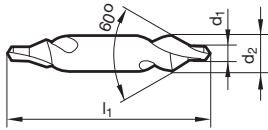


Catalog no. 71605



P	M	K	N	S	H
•	•	•	•	○	

- web thinning  $\geq \varnothing 2.000$
- relieved cone
- with re-inforced neck to provide high fracture resistance
- recess between countersink and hole for additional lubricant space
- for centre holes acc. to DIN 332, sheet 1, form A



d1 mm	d2 mm	l1 mm
1.000	3.150	31.500
1.250	3.150	31.500
1.600	4.000	35.500
2.000	5.000	40.000
2.500	6.300	45.000
3.150	8.000	50.000

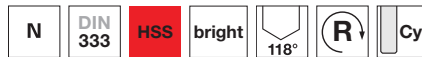
d1 mm	d2 mm	l1 mm
4.000	10.000	56.000
5.000	12.500	63.000
6.300	16.000	71.000

## Centre drills

### Centre drills without flat

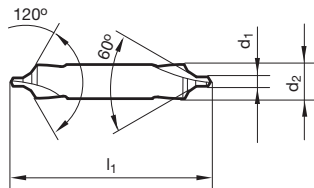


Catalog no. 71604



P	M	K	N	S	H
•	•	•	•	○	

- web thinning  $\geq \varnothing 2.000$
- relieved cone
- for centre holes acc. to DIN 332, sheet 1, form B
- with protective 120° countersink



d1 mm	d2 mm	l1 mm
1.000	4.000	35.500
1.250	5.000	40.000
1.600	6.300	45.000
2.000	8.000	50.000
2.500	10.000	56.000
3.150	11.200	60.000

d1 mm	d2 mm	l1 mm
4.000	14.000	67.000
5.000	18.000	75.000
6.300	20.000	80.000

## Centre drills

### Centre drills with flat

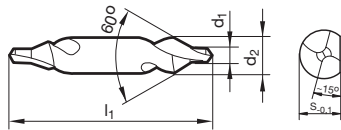


Catalog no. 71607



P	M	K	N	S	H
•	•	•	•	○	

- web thinning  $\geq \varnothing 2.000$
- relieved cone
- for centre holes acc. to DIN 332, sheet 1, form A



d1 mm	d2 mm	l1 mm
1.600	4.000	35.500
2.000	5.000	40.000
2.500	6.300	45.000
3.150	8.000	50.000
4.000	10.000	56.000
5.000	12.500	63.000

d1 mm	d2 mm	l1 mm
6.300	16.000	71.000

## Centre drills

### Centre drills with flat

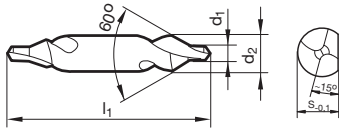


Catalog no. 71609



P	M	K	N	S	H
●	●	●	●	○	○

- web thinning  $\geq \varnothing 2.000$
- relieved cone
- correct positioning between lathe centres
- for centre holes acc. to DIN 332 part 1, form R



d1 mm	d2 mm	l1 mm
1.600	4.000	35.500
2.000	5.000	40.000
2.500	6.300	45.000
3.150	8.000	50.000
4.000	10.000	56.000
5.000	12.500	63.000

d1 mm	d2 mm	l1 mm
6.300	16.000	71.000
8.000	20.000	80.000