

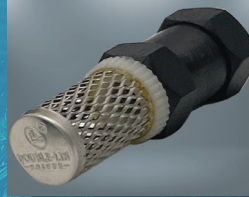
FEATURES:

- High durability - made from billet 6061 Aluminium
- Chemical resistant surface treatment
- Drum and Pail mount options
- Water powered; Non-electric
- Ideal for all-purpose oils (Soluble and Semi-Synthetic)
- Reduced downtime
- Accurate and consistent concentration mixtures
- Double-lock dial system



VARIABLE DOSAGE

Unique piston design providing complete control of coolant mixing ratio and dosage from 1% - 20% concentration



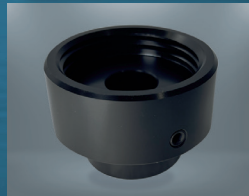
STAINLESS STEEL FILTER

The COOLMXR utilises a special stainless steel suction filter to ensure no harmful particles pass through the Venturi system preventing any damage



205 LITRE BARREL MOUNT

The COOLMXR 205L Barrel Mounts are available in three options:
50mm - Included
100mm - PART NO. TP-CM-07-100
150mm - PART NO. TP-CM-07-150



20 LITRE PAIL MOUNT

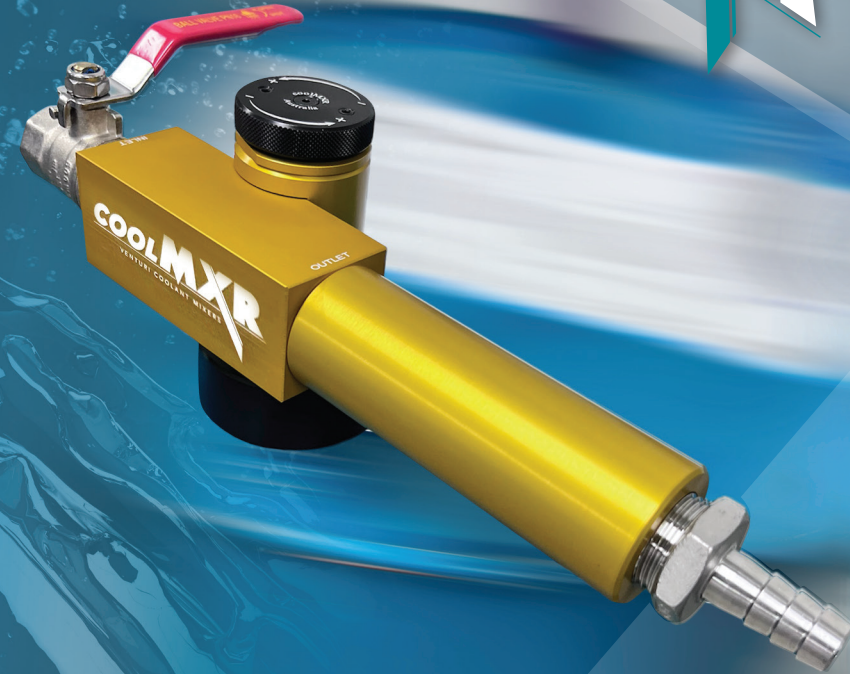
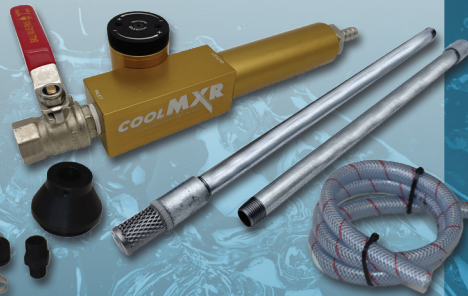
A 20L pail attachment is also available which can be interchanged by simply unscrewing from the master cylinder.

PART NO. TP-CM-08

KIT CONTENTS

- 1x COOLMXR Venturi Mixer Body
- 1x 205L Barrel Mount Adaptor
- 1x 300mm Polypropylene riser
- 1x 400mm Polypropylene riser
- 1x Output Extension Hose
- Tap Connector and Valve tap
- User instructions

PART NO. COOLMXR-KIT



COOLMXR

COOLANT VENTURI MIXERS

Distributed by:



COOLANT PROPORTIONAL MIXER

*Drum mounted automatically mix's
liquid concentrates with water*

TECHNICAL DATA :

Dilution Range: 1:100 to 1:20 (1 to 20%)

Operating Temperature Range: +/- 25° Celsius

Housing Material: 6061 Aluminium

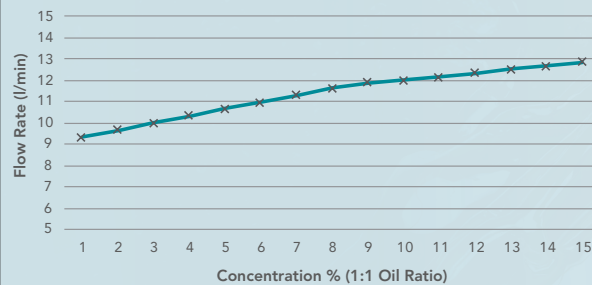
Connection Size: 3/4" BSP

Operating Pressure Range: 30-75 PSI

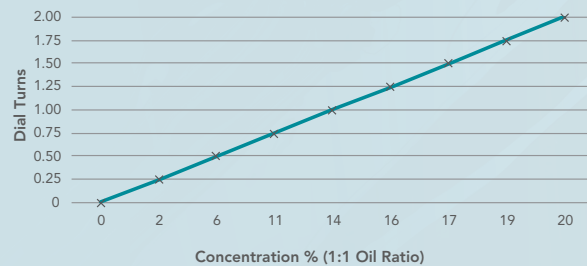
Description:

40W x 40H x 250L Venturi proportional mixer tap with flow ball valve, stainless filter, poly risers hoses and all fittings.

Flow Rate



Concentration Setting Guide



ADJUSTABLE CONCENTRATION

A wide range of coolant mixing ratios can be set from 1% - 20% with simple rotation of the dial.

LOCKABLE DIAL

A double screw lock system has been incorporated into the COOLMXR dial to ensure set concentration is fixed and tamper-proof

SMART MIXING TECHNOLOGY

Specially tuned spout extension provides the perfect mixing environment for coolant output.

HIGH EFFICIENCY OUTPUT

The COOLMXR works to standard water pressure with smart mixing technology producing high output, including a separate on/off valve tap.

SIMPLE CONNECTIVITY

Suitable for both 205L barrels and 20L pails with secure interchangeable Polypropylene risers.

