

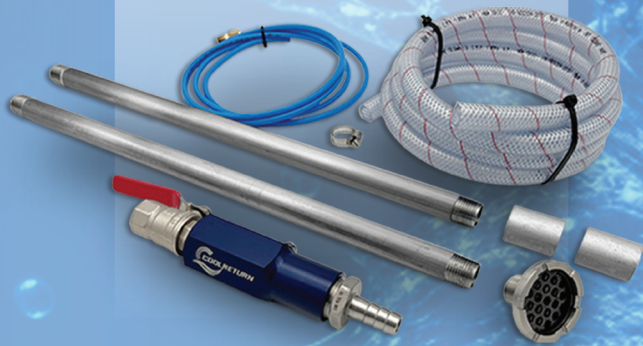
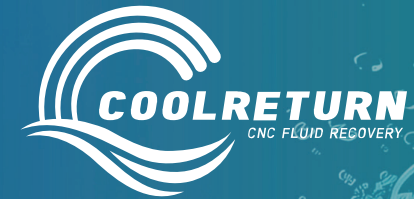
KIT CONTENTS

- 1x COOLRETURN system
- 1x 5mm Inlet Flex Hose
- 1x 1mm Inlet Flex Hose
- 1x S/S Mesh Inlet Suction Head
- 2x 450mm Galavanised Steel Pipe
- 2x 3/4 "Galavanised Female Sockets

PART NO. COOLRETURN-KIT

FEATURES:

- Heavily reduces coolant consumption by recovery
- Adapts to most CNC machines
- Driven by CNC Coolant pump
- No external power required
- Heavy duty coolant suction return system



PERFORMANCE CHART

Coolant Pressure (PSI)	Flow Rate(l/min)
20	1.2
30	1.8
40	2.1
50	2.4

*It is recommended to run a flow rate greater than 20 PSI+ for best results

*Max flow should not exceed 150 PSI

Distributed by:



CNC FLUID RECOVERY SYSTEM

**ADAPTS TO MOST SWARF BINS FOR
AUTOMATED COOLANT RECOVERY**



The COOLRETURN fluid recovery system connects directly to your CNC coolant pump and operates as soon as the coolant is activated, using an intuitive venturi system. As the coolant passes through the unit, it creates suction to recover coolant that has been displaced into the swarf bin.



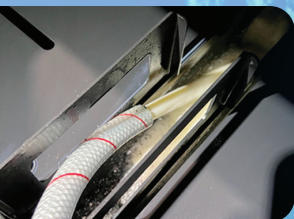
CUSTOMISABLE LENGTHS

The COOLRETURN system utilises adaptable galvanized pipe to suit varied swarf bin heights.



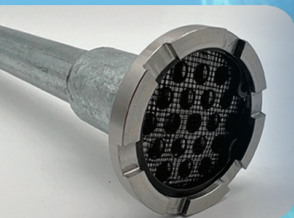
SHUT OFF VALVE

Designed with a quick shut-off valve feature to easily control when unit is used.



SUCTION RETURN

Large coolant return hose for efficient draining of swarf bin.



DOUBLE FILTRATION

The COOLRETURN incorporates a double filtration system to ensure safe, reliable use.

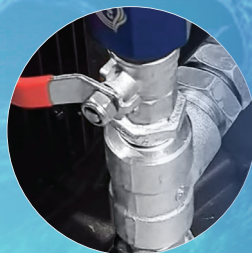
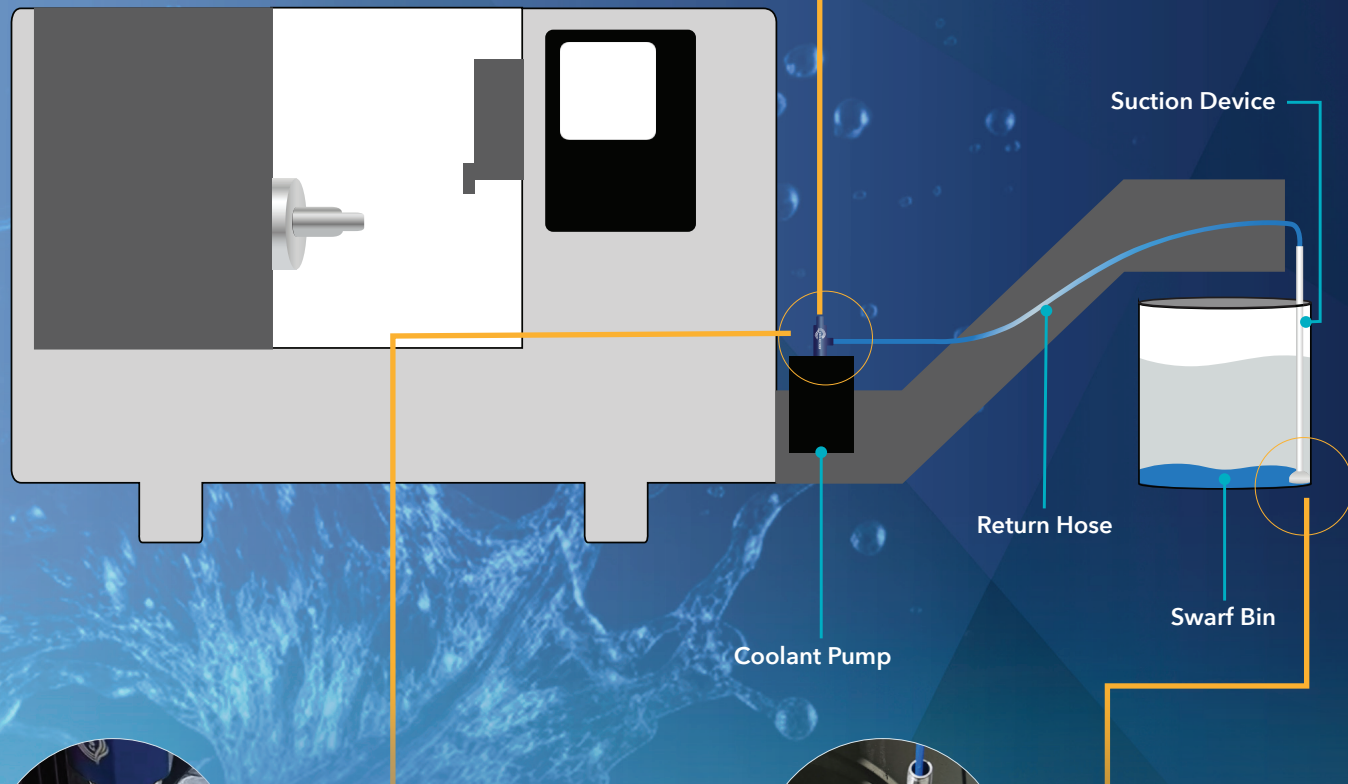
SETUP DIAGRAM:



COOLRETURN SUCTION BODY

Easily connects to CNC coolant pump using 5/8 BSPT thread.

Efficient Coolant Recovery,
Zero Swarf Contamination.
Engineered in Australia
with uncompromising
quality.



EASY CONNECTIVITY

COOLRETURN connects to most CNC coolant pumps, by screwing into T.Piece connection of feed back hose.



SUCTION DEVICE

Suction wand drops into swarf bin. Length can be customised to suit any bin size with galvanized pipe extensions.

Reduce coolant waste, save money, and help protect the environment!