

Side Lock Holder

Features:

- For clamping the End Mill with DIN 1835 Form B shank.
- The End Mill Holders are supplied with set screws which are made according to DIN 1835 B-M14x16.



Fig.1

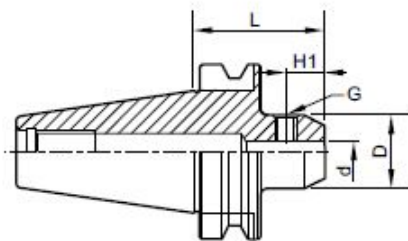
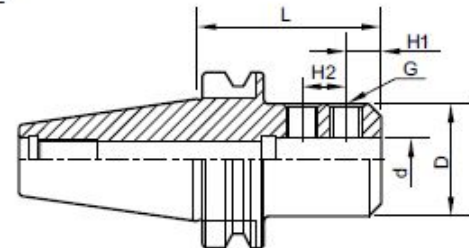


Fig.2



Taper Shank	Ordering Code	Type of Holder	Fig.	d	L	D	H1	H2	G	
BT30	330160-062	BT30-SL6-60	1	6	60	25	18	-	M6	
	-082	-SL8-60		8		28	18		M8	
	-102	-SL10-60		10		35	20		M10	
	-122	-SL12-60		12		42	22.5		M12	
	-161	-SL16-70		16	75	48	24		M14	
	-202	-SL20-75		20		52	25		M16	
BT40	340160-062	BT40-SL6-75	1	6	75	25	18	-	M6	
	-082	-SL8-75		8		28	18		M8	
	-102	-SL10-75		10		35	20		M10	
	-122	-SL12-75		12		42	22.5		M12	
	-162	-SL16-75		16		48	24		M14	
	-202	-SL20-75		20		52	25		M16	
	-252	-SL25-90	2	25	90	60	24	25	M16	
	-322	-SL32-90		32				28	M16	
BT50	350160-062	BT50-SL6-105	1	6	105	25	18	-	M6	
	-082	-SL8-105		8		28	18		M8	
	-102	-SL10-105		10		35	20		M10	
	-122	-SL12-105		12		42	22.5		M12	
	-162	-SL16-105		16		48	24		M14	
	-202	-SL20-105		20		52	25		M16	
	-252	-SL25-105	2	25	105	60	24	25	M16	
	-322	-SL32-105		32				28	M20	
	-402	-SL40-120		40				120		27
	-422	-SL42-120		42					30	